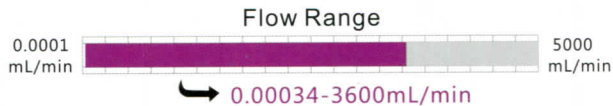


# Standard Peristaltic Pump



## Product Introduction

Standard peristaltic pump is the first choice for laboratory applications, and also usually used together with analytical instrument. With the excellent performance-price ratio, the pump gets approval from customers.

### Load various pump heads:

YZ1515x, YZ2515x Pump Head ; MC Series Multichannel Pump Head (MC1~MC12); DG Series Multichannel Pump Head (DG-1~DG-12); SN25 Standard Pump Head; DZ25-3L fast load pump head.

Working quiet

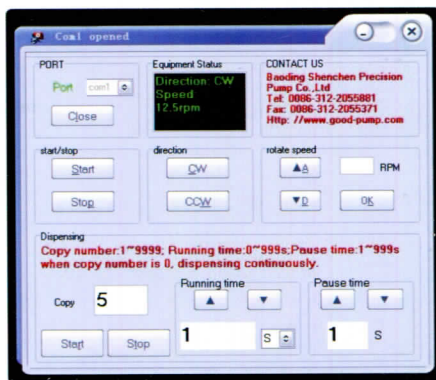


## Model Number

• BT100N • BT300N • BT600N

## RS232, RS485 Communication Interface:

Support Shenchen communication protocol or standard Modbus communication protocol (RTU Mode).



## RS232/RS485 Debugging software:

The peristaltic pump can connect with PC through serial ports, to control start/stop, direction and speed; also can control the dispensing and filling function. According with remote control needs, it can feedback the working status in time.

## Typical Application

- Special application for the laboratory of university research institute.
- Support chromatograph and titration apparatus.
- Pilot scale and industry production.

## Technical Specifications

Standard Peristaltic Pump		Pump head & Flow rates (mL/min)								
		YZ1515x	YZ2515x	MC1~MC12 (10)	MC1~MC12 (6)	DZ25-3L	SN25	SN15-14	SN15-16	
Drive & speed(rpm)	Tubing	13 <sup>#</sup> , 14 <sup>#</sup> , 19 <sup>#</sup> , 16 <sup>#</sup> 25 <sup>#</sup> , 17 <sup>#</sup> , 18 <sup>#</sup>	15 <sup>#</sup> , 24 <sup>#</sup>	Inner diameter: 0.13-3.17mm Wall thickness: 0.8-1mm		15 <sup>#</sup> , 24 <sup>#</sup> 35 <sup>#</sup> , 36 <sup>#</sup>	24 <sup>#</sup>	14 <sup>#</sup>	16 <sup>#</sup>	
		BT100N	0.5-150rpm	0.035-570	0.085-435	0.00034-32 (suggest working-rotating speed ≤ 150rpm)	0.00042-45 (suggest working-rotating speed ≤ 150rpm)	1.05 ~ 900	0.2-375	0.12 ~ 36
	BT300N	0.5-350rpm	0.035-1330	0.085-1015	1.05 ~ 2100			0.2-875	0.12 ~ 84	0.44 ~ 308
	BT600N	0.5-600rpm	0.035-2280	0.085-1740	1.05 ~ 3600			0.2-1500	0.12 ~ 144	0.44 ~ 528
Speed resolution	Rotation direction	Speed control		Display	External control					
0.1rpm	CW/CCW	Lightly touch membrane keypad for adjusting speed or full speed		3 digit LED displays current rotating speed	Start/Stop and CW/CCW: TTL level. Speed control: 0-5V/0-10V/4-20mA. RS232, RS485 serial communication control Start/Stop, CW/CCW and speed					
Power supply		Power consumption	Operating condition		Model number	Drive dimensions (L × W × H)		Protection rating		
AC 220V ± 10%, 50Hz/60Hz(standard)		<45w	Temperature 0 to 40 °C; Relative humidity < 80%		BT100N, BT300N	180 × 130 × 190mm	4.02kg	IP31		
AC 110V ± 10%, 50Hz/60Hz(optional)					BT600N	210 × 130 × 190mm	4.94kg			

Peristaltic Pump